



PURE *M*ICHIGAN[®]

WINTER APPLIQUÉ PATTERN

PATTERN DIFFICULTY: BEGINNER FRIENDLY

BY: **DUMPS**TER★SLAYER

USE #PUREMICHIGANSWEATER
TO SHARE YOUR CREATIONS WITH US!

THRIFTING FABRICS GUIDE

I (Madie, AKA DumpsterSlayer), of course, inspire you to use secondhand fabrics or deadstock for this project. There is enough clothing and fabric in this world to make anything time and time again without ever needing something new! Secondhand fabric is perfect because you can find unique vintage patterns, find extremely affordable fabric, and you can single handedly reduce textile waste. How exciting! I've written out a quick guide for thrifting fabrics to help you find some golden gems and turn them into some incredible crafts. Take a peek before you head to the thrift, and over time you'll have the fabric collection of your dreams! Also a great resource for materials and sewing supplies are local "buy nothing" groups on Facebook! Join in your area if you're in need of a machine, parts, fabric, etc.!

DON'T BE AFRAID OF PATCHWORK

I used to be so intimidated by patchwork, because it can be! But truthfully, with time and patience, it can become your favorite way to create. It is a wonderful way to use up scraps or to create from bits and pieces of fabrics you find while thrifting. I love finding tea towels and patching them together, or looking for similar color schemes over time.

HEAD TO THE LINENS

Get creative!!! Literally anything can be turned into something new. Find a dress with a pattern you like? Get it! Shower curtain that's cute? WHY NOT! There are billions of pounds of textile waste that could in-turn be made into ANYTHING!

LOOK AT SMALL LOCAL THRIFT STORES & THE BINS OVER CHAINS

The bins get so many materials that already did not sell in a thrift store and will soon become trash. Bins typically sell by the pound therefore this can be an extremely affordable way to find materials to work with. Small local thrift stores also have better prices on linens than larger thrift store chains. This way, you can find more affordable fabric AND keep your money within the local economy. So amazing!

CHECK THE CRAFT AREA FOR SEWING SUPPLIES AND FABRICS

And lastly, make sure to take a peek at your thrift stores craft section. I find tons of thread, pins, Bias tape, etc. When learning, this is a great way to find affordable materials as you begin your sewing journey, and you're preventing them from being tossed. Sometimes craft sections even have yards or more of fabrics that need a home!

THRIFTING FABRICS GUIDE

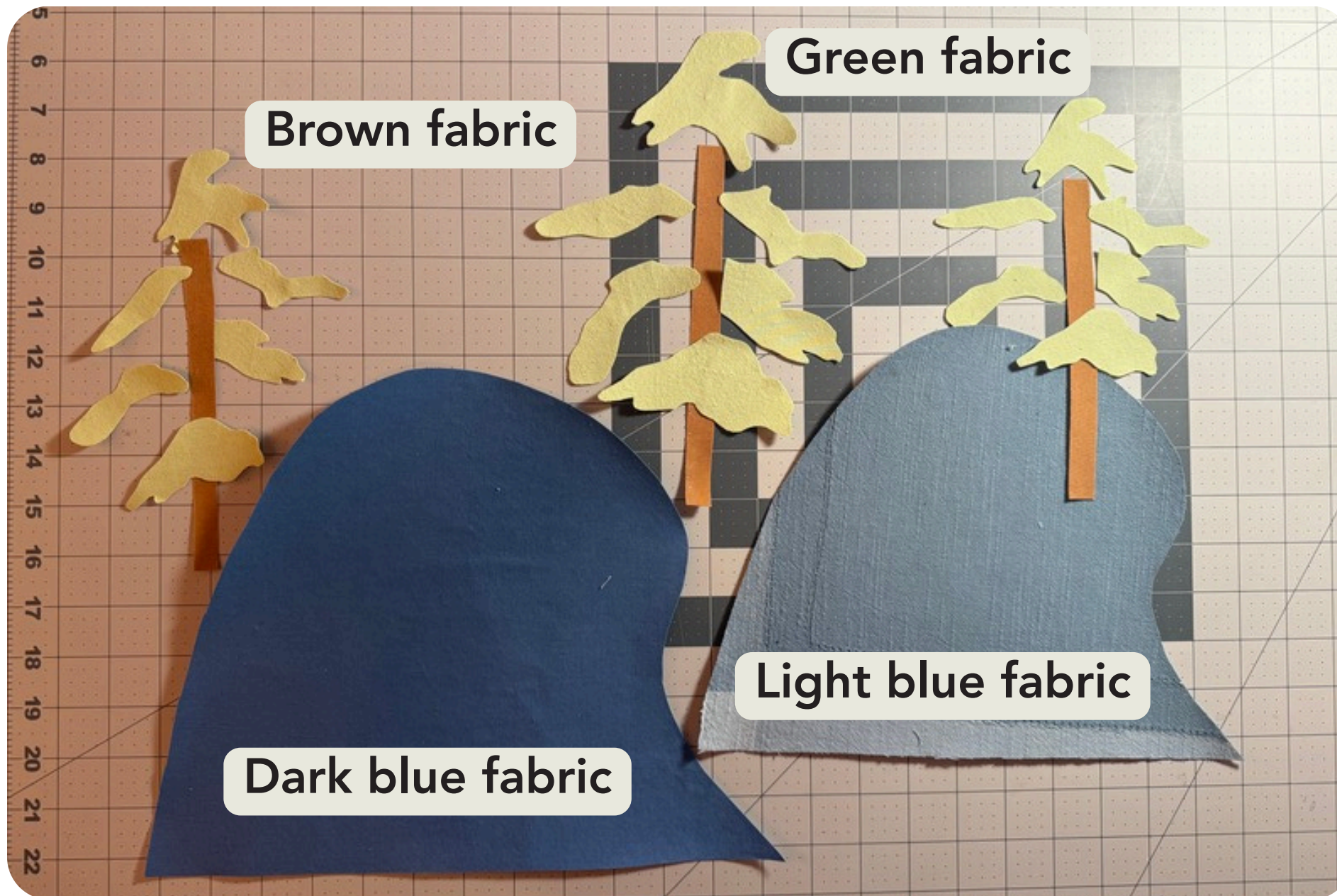
Picky about your fabrics and don't want to hunt? Try shopping for deadstock fabric instead! Deadstock fabric is fabric from fashion brands that is no longer in season, and they no longer need it. Typically it is thrown away, how lame, but there are plenty of amazing brands who collect the deadstock and resell it. This allows you to shop online thousands of options and pick the exact yardage, material, and pattern that you like. Note, you should wash all fabrics before use because they will shrink.

SOME REALLY AMAZING COMPANIES THAT SELL DEADSTOCK:

- Sew by Sew
- Stone Mountain & Daughter Fabrics
- Litmans Fabric Store
- Mood Fabrics

And there are plenty more! Just search up deadstock fabric and look around to find what suits your needs best. These are simply some of my favorites :)

FABRIC REQUIREMENTS



Choose at least one item to appliqué on!
This could be a hoodie, throw pillow, apron, stocking, you name it!

FABRIC REQUIREMENT MEASUREMENTS:

Dark Blue: 13x10 inches

Light Blue: 12x9 inches

Green (small trees): 5x8 inches

Green (large tree): 5x10 inches

Brown: 8x1.5 inches

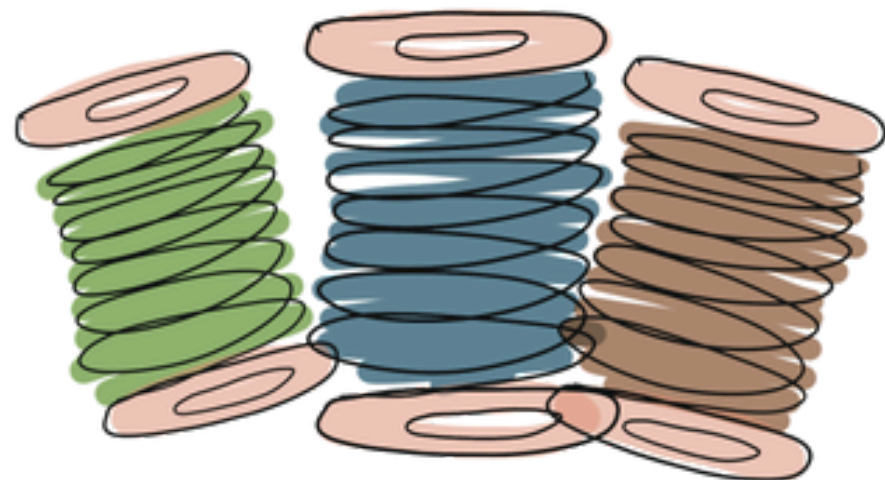
Mittens (optional): 3x4 inches per mitten

Note: Fabric colors are a choice! Please make this creation yours by choosing which colors suit your style and creativity best.

SUPPLY REQUIREMENTS

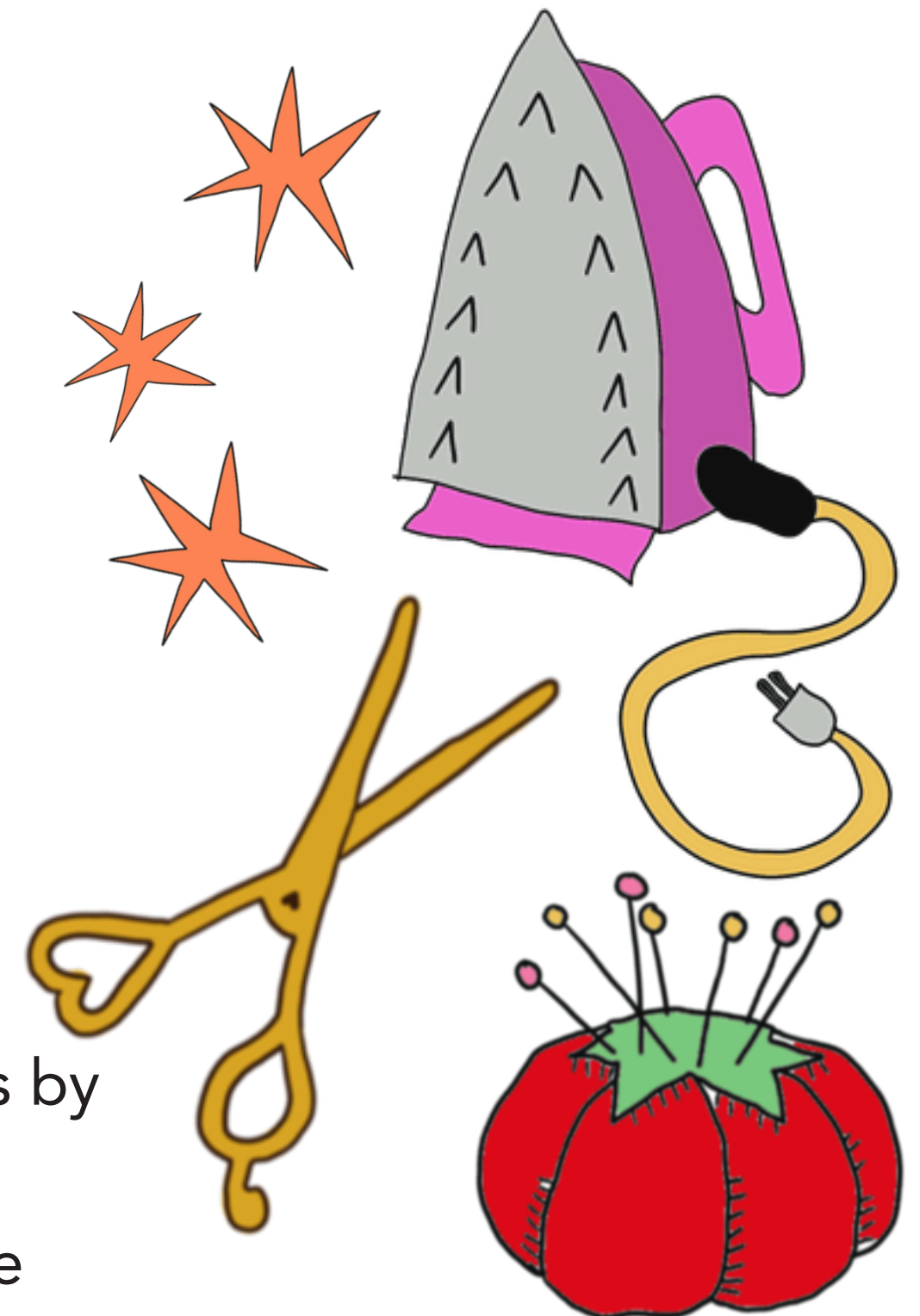


- Glue stick
- Sewing pins
- Iron & iron-safe surface
- Fabric scissors & craft scissors
- Clear tape
- Blue embroidery floss for snowflakes
- Thread to match the colors of your fabric
- Fabric marker, chalk or white colored pencil



OPTIONAL:

- Free motion embroidery foot
- Sewing machine (yes, you can stitch this by hand!)
- HeatnBond® Lite to sew or no-sew tape
- HeatnBond® for a permanent no-sew option

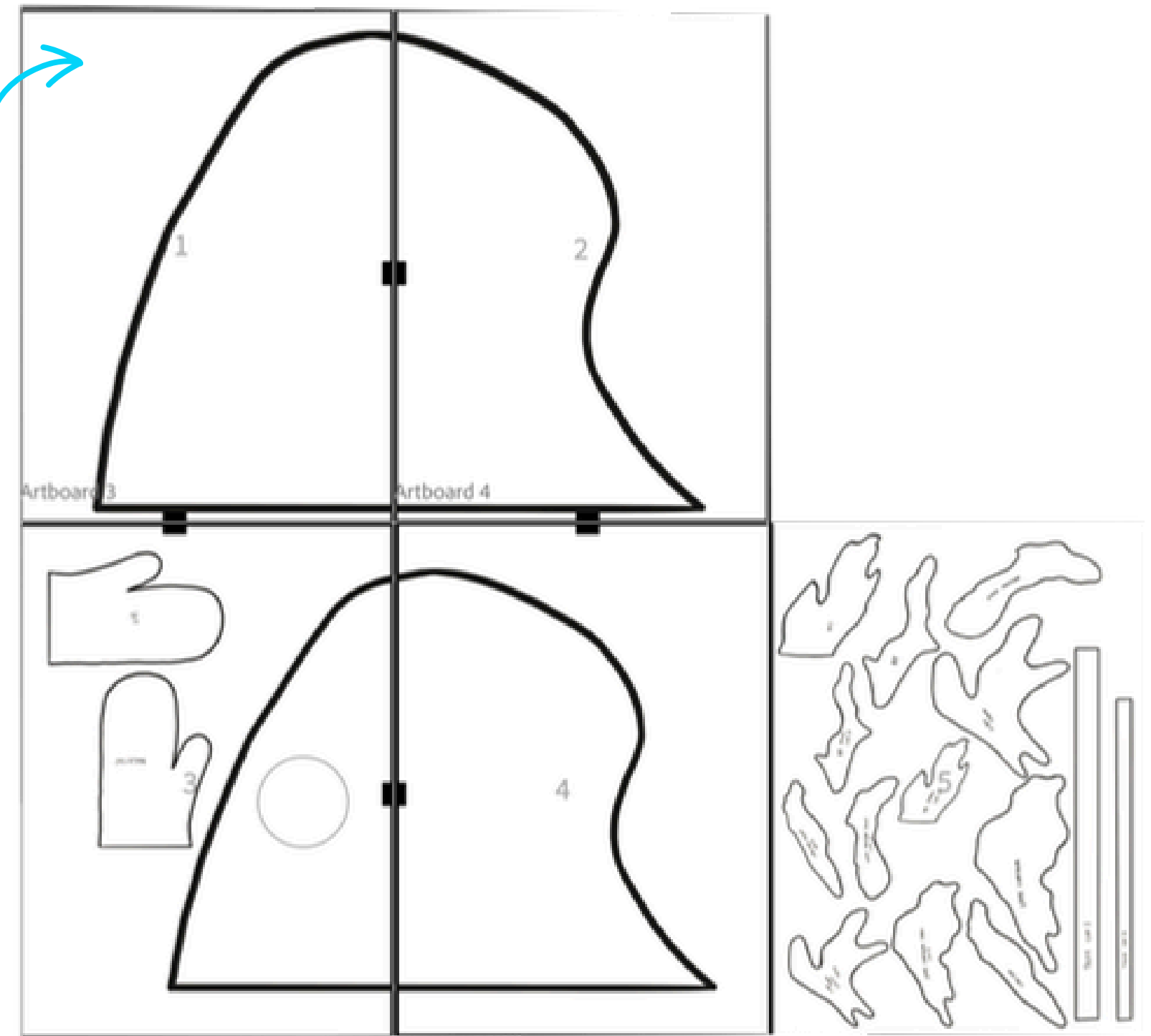


PRINTING AND GUIDE LAYOUT

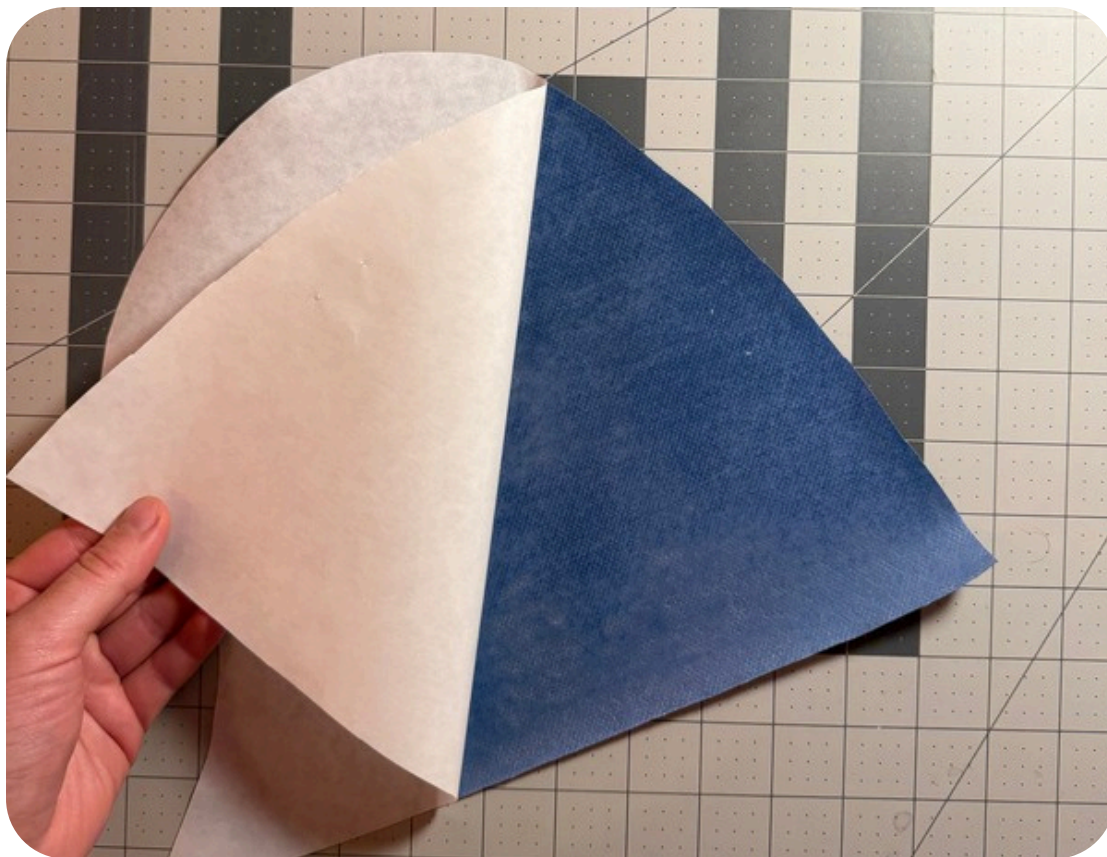
Print the PDF file called "Pure Michigan Sweater Pattern Print" make sure it is in 100% scale. It should print out into 5 tiles to create the full pattern. Tiles 1-4 will need to be aligned at the notches and taped together before cutting out the pattern shapes. A reference to how it should look for assembly is right here.

When cutting your pattern pieces from your fabric I recommend using something to weight down your paper pattern or pinning it into place. Refer to the [YouTube](#) tutorial for a detailed visual for these steps.

Don't have a printer? It costs less than a dollar to print this pattern at your local library!!



INSTRUCTIONS

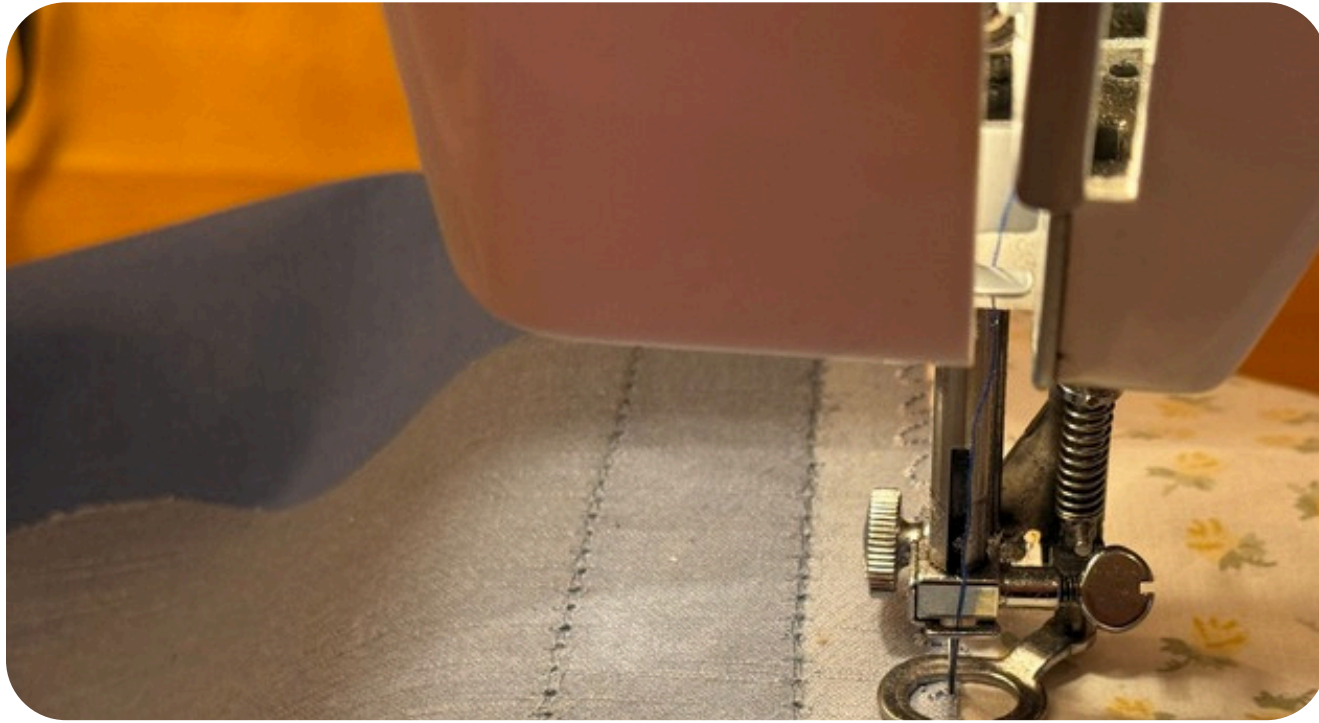


- 1** Attach your sewable HeatnBond® to all of the fabric you are using by following the instructions on the packaging.

- 2** Lay out your blue hills on your item of choice. When you love the design, peel off the back of your HeatnBond® and iron into place. Allow to cool for 30 seconds before sewing.



INSTRUCTIONS

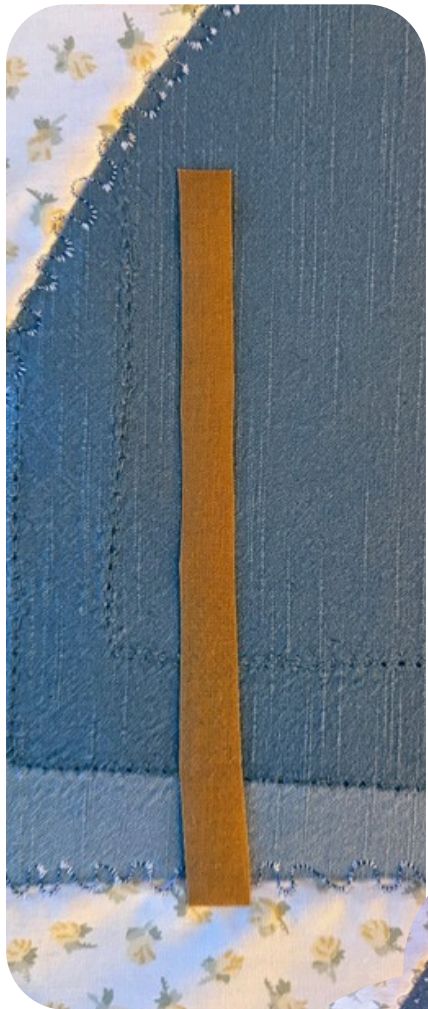


- 3** Sew your hills into place using your blue thread. You can straight stitch, zig zag, or use a free motion foot to sew around your hills on a machine. If you are hand sewing, you can straight stitch or blanket stitch.

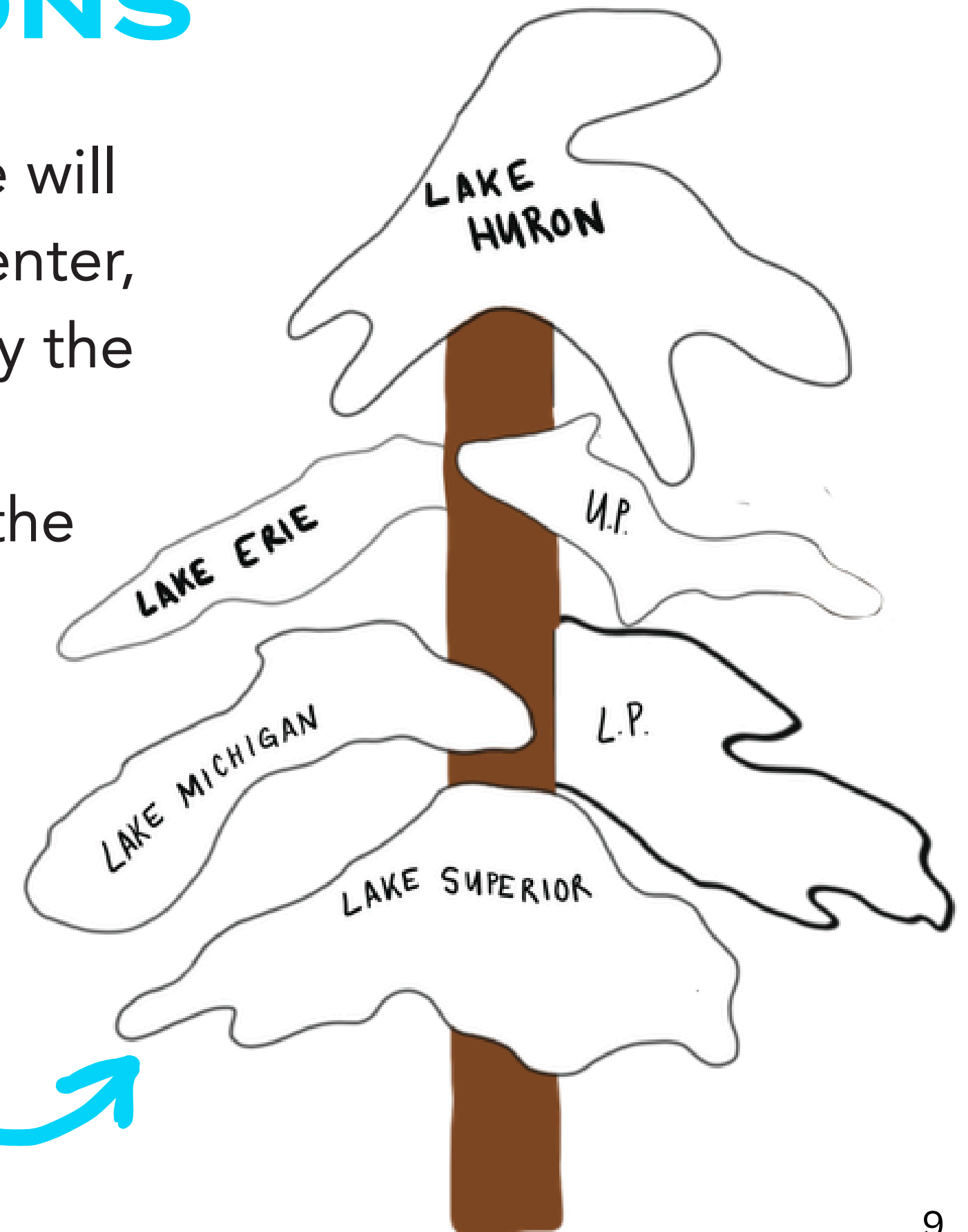
Note: Throughout this project, I will be using a free motion embroidery foot. This is a sewing foot that picks up the presser foot with each stitch, allowing you to move your needle “freely” and create stitches similar to drawing. This is how I create swirls and squiggles.

INSTRUCTIONS

- 4** Next, lay out your tree shapes. We will be placing the larger tree in the center, the two smaller trees around it. Lay the tree trunk (brown) down first, then layer your lake branches. Peel off the backs and iron into place.



For reference on placement of the tree branches, refer to this diagram.



INSTRUCTIONS

5 Sew tree branches into place using your green thread.

Once branches are all sewn, it should look like this!



I created this swirly effect using my free motion embroidery foot.

INSTRUCTIONS

- 6** Sew your tree trunks into place using your brown thread. To create a bark effect you can use the free motion foot to draw lines and swirls throughout your trunks.



You could also create this look by simply straight stitching up and down throughout your trunks.



INSTRUCTIONS



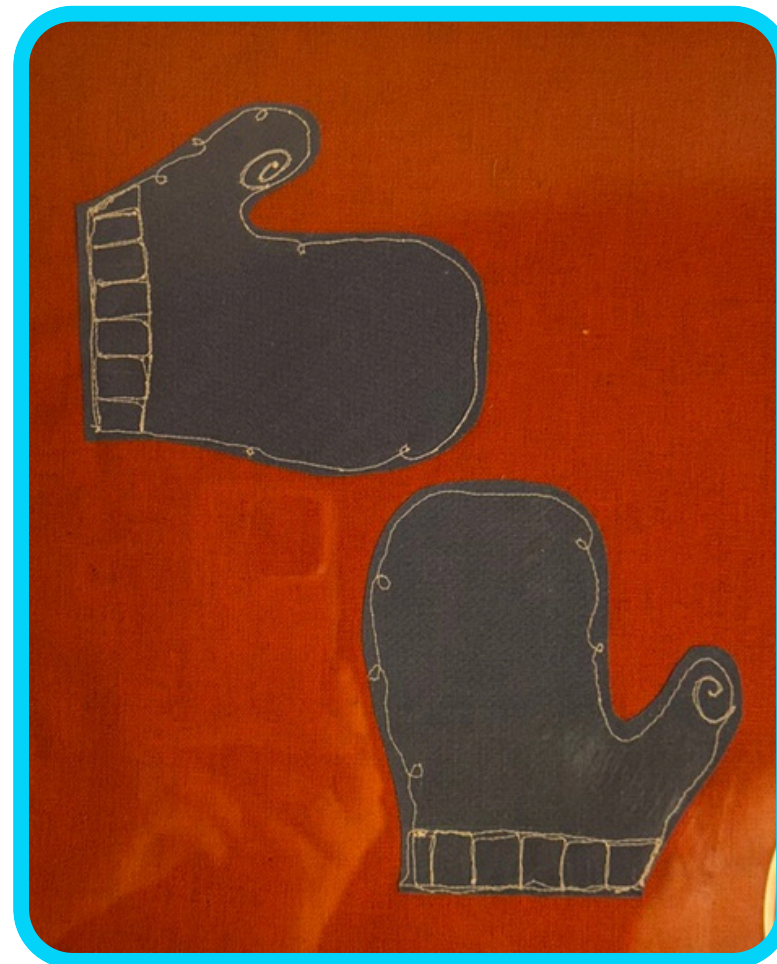
7 Now, we are hand stitching our snowflakes. First, take your white marker and draw out however many snowflakes you'd like by marking them with a "t" shape.

8 Next, stitch the "t" shape with your blue embroidery thread. For a visual demonstration, refer to the follow-along [YouTube video](#).



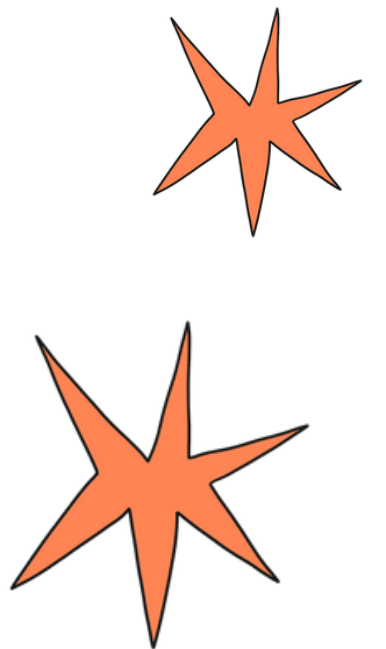
INSTRUCTIONS

- 9** After you stitch the "t" shape, next stitch a small "x" over top of your "t." Repeat for all snowflakes.



For creating the optional mittens, you will follow this exact same process.

For visual demonstrations, refer to [YouTube](#).



FINISHED PICS





YOU DID IT!!

Happy sewing & see you outside!

Share your creations using #PureMichiganSweater

PURE *M*ICHIGAN® DUMPSLAYER